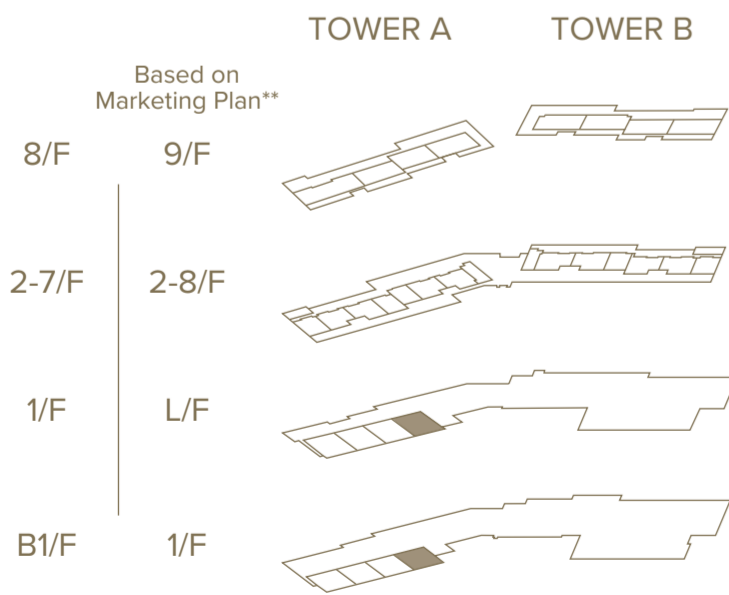
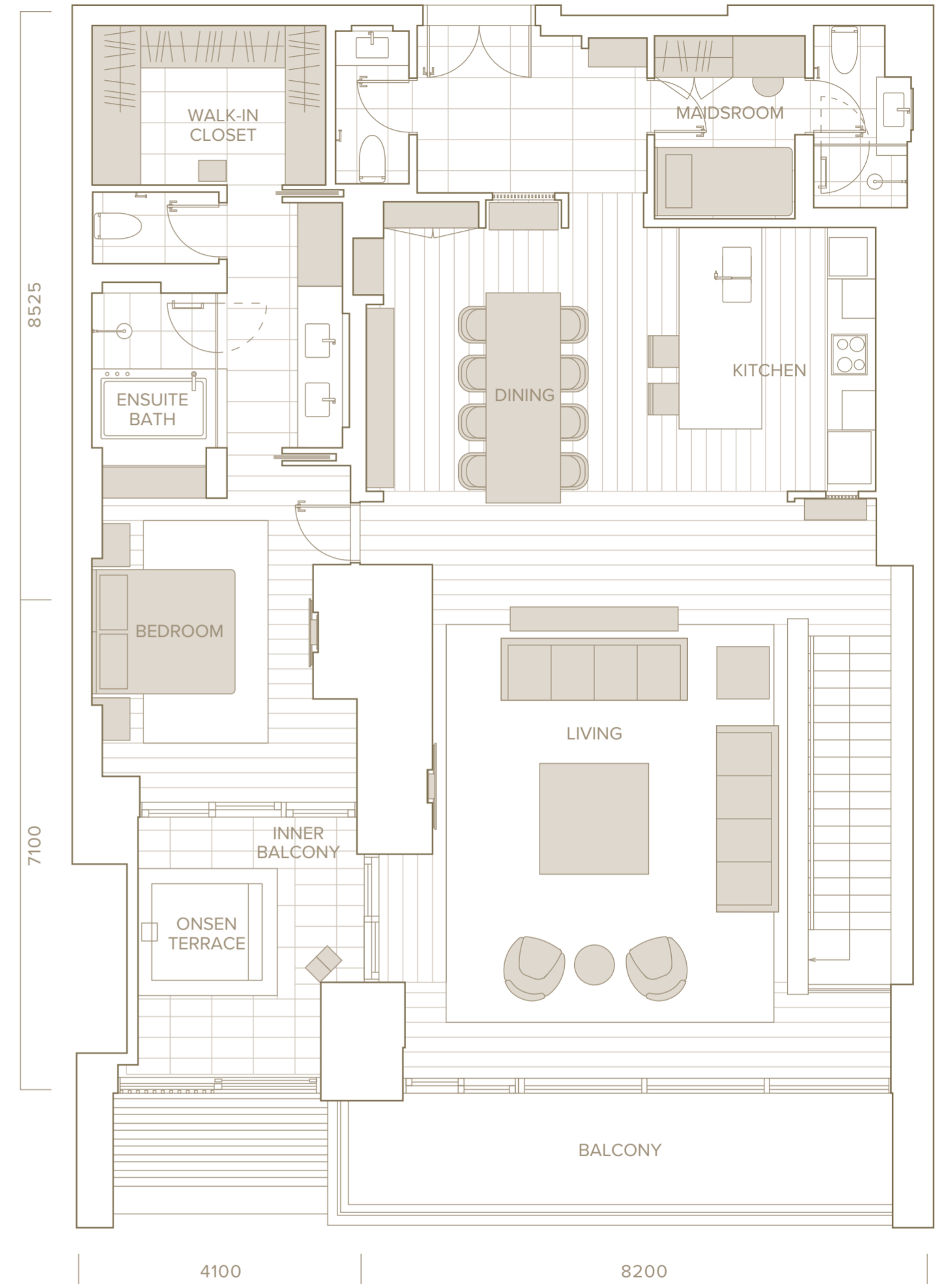
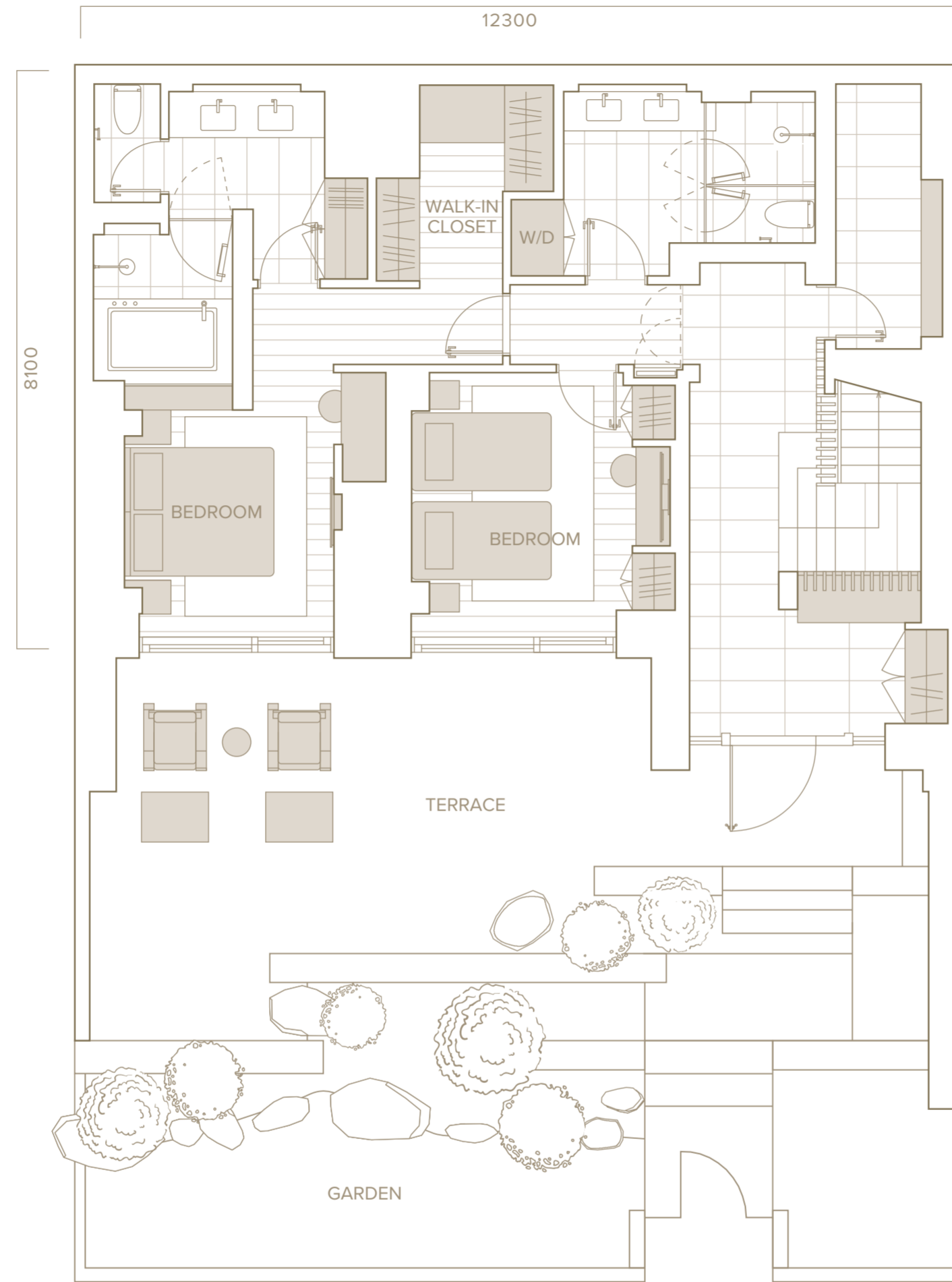


YOTEI SPRING

3BR 292.25 SQ M (3145.74 SQ FT / 88.40 坪)

TOWER A Room 01 (B1/F-1/F)
(Based on Marketing Plan : 1/F-L/F**)



B1/F
(Based on Marketing Plan : 1/F**)

1/F
(Based on Marketing Plan : L/F**)

* Area in square feet and tsubo (坪) are converted at a rate of 1 sq.m = 10.7639 sq.ft / 0.3025 (坪) and rounded down to the third decimal place.

**4/F is omitted for Tower A & B

The shape and area of the above balcony may be changed in future 上記のバルコニーの形状及び面積は変更の可能性がございます

This material is intended to be issued to Professional Investors only, not to Hong Kong public in general.*

*Notes: 1. In so far as Hong Kong is concerned, units in the Park Hyatt Niseko Hanazono Residences ("Units") will be sold or disposed of exclusively to "professional investors" as defined in Part 1 of Schedule 1 to the Securities and Futures Ordinance (Chapter 571 of the Laws of Hong Kong) and/or as prescribed in section 3 of the Securities and Futures (Professional Investor) Rules (Chapter 571D of the Laws of Hong Kong). 2. Before the signing of any sale and purchase agreement for any Units, the intended purchaser will be required to duly sign a declaration in such form and include such particulars as the Seller requires to declare that he/she/it is a Professional Investor. He/She/It may also be requested to provide relevant documents in support if the Seller considers necessary. 3. In addition, the agreement for sale and purchase of any Units will contain a warranty from the purchaser that he/she/it is a Professional Investor. 4. If in doubt, you are advised to consult your own solicitor, consultant or financial adviser as to whether you are a Professional Investor.

Copyright©2019 Pacific Century Premium Developments Limited. All rights reserved. 本図面における記載は参考用イメージに過ぎず、投資家になられる方々へのアドバイスとして提供されることを想定していません。本図面では、明示的又は黙示的に、ここに示されている記述や情報の正確性、公平性、及び完全性について、いかなる表明や保証もなされていないものとさせていただきます。本図面は、資産購入に向けた提案や勧誘を何ら構成するものではなく、いかなる契約や約束の根拠となるものでもありません。本図面は、当局による承認済の開発計画に基づいており、最終のものではなく、今後も当局の追加の承認が必要となるような変更を生じる場合があります。本図面と竣工時の状態が異なる場合は、竣工時の状態を優先させていただきます。予めご了承ください。ハーモニー特定目的会社（「アペロツパー」）及びその関連会社は、本レジデンスの広告及び販売に関する一切の責任を負っており、ハイアットインターナショナルコーポレーションは、アペロツパー及びその関連会社に対し、マーケティングライセンス契約に基づき、ハイアットの名前と商標を使用して、本レジデンスの販売を勧誘・実施する権限を付与しています。ハイアットインターナショナルコーポレーション、ハイアットインターナショナルアジアパシフィックリミテッド又はそれらの関連会社のいずれも、本レジデンスの開発、広告、販売又は運営に関する一切の責任を負いません。

Copyright©2019 Pacific Century Premium Developments Limited. All rights reserved. Any descriptions herein are for illustration purposes only. It is not intended to be relied upon as advice to potential investors. No representation or warranty, express or implied, is made herein and no reliance should be placed on the accuracy, fairness or completeness of any message or information presented herein. This material does not constitute an offer or invitation to subscribe for or purchase any assets, and nothing contained herein shall form the basis of any contract or commitment whatsoever. While the plan presented herein is based on once approved plan by the relevant authority, please be informed that this will not be the final one and will be further revised and changed subject to additional approval by relevant authority. Please be advised that, if there are any differences between the plan presented herein and actual plan, the actual plan shall prevail over the presented plan. Harmony TMK ("Developer") and its affiliates are solely responsible for the marketing and sale of the Residences. Hyatt International Corporation has granted Developer and its affiliates the right to offer and sell the Residences using the Hyatt name and trademarks pursuant to a Marketing License Agreement. None of Hyatt International Corporation, Hyatt International-Asia Pacific, Limited or any of their affiliates is responsible for, or makes any representation or warranty concerning the development, marketing, sale or operation of the Residences.

PARK HYATT NISEKO™

HANAZONO
RESIDENCES

